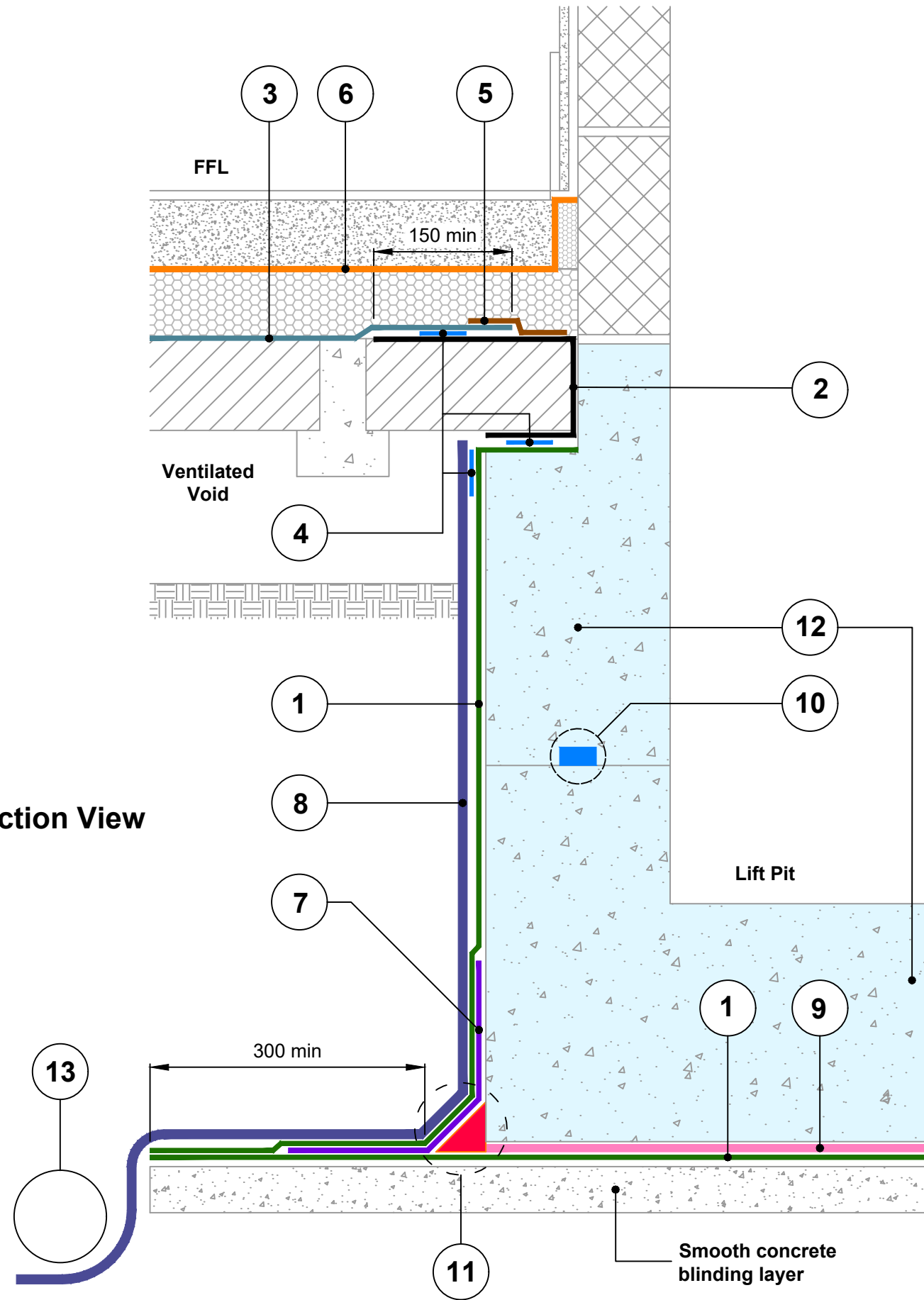


**Key to materials:**

1	Visqueen Self Adhesive Membrane on Visqueen HP Tanking Primer
2	Visqueen Zedex CPT High Performance Damp Proof Course
3	Visqueen High Performance Damp Proof Membrane
4	VisqueenPro Double Sided Jointing Tape
5	VisqueenPro Single Sided Tape
6	Visqueen Vapour Check or Visqueen Vapour Barrier
7	VisqueenPro Detailing Strip on Visqueen HP Tanking Primer
8	Visqueen Protect&Drain, 12mm
9	Visqueen TreadGUARD 1500
10	Visqueen IGW10 Waterstop bedded in Visqueen Waterstop Adhesive
11	Visqueen Axiom UniSeal fillet, 35mm x 35mm
12	Visqueen IGW Watertight Concrete
13	Maintainable land drain by others

**Section View**



**CRITICAL GUIDANCE NOTES**

Visqueen Guidance Details are for illustration purposes only. It is the lead designer's responsibility to ensure Guidance Details are incorporated correctly into construction drawings.

Visqueen take no project design liability, or responsibility for the use of Guidance Details. Visqueen have no control over the situation in which the products are installed. Visqueen provide a Contract Design Service where project specific drawings can be produced. Contact Visqueen Technical Services for further information.

Site construction sequencing should be assessed before the appropriate Guidance Detail is selected and approved by the lead designer.

All Visqueen materials must be installed in strict accordance with the Visqueen Product Datasheets and applicable third party certificates.

DPCs and DPC cavity trays to be installed in accordance with BS 8215:1991, PD 6697:2019 and BS 8000-3:2020.

Visqueen air and vapour control layers (AVCLs) should be installed in accordance with the recommendations of BS 5250:2021.

Ventilated air space depth and venting unit quantity as per national building regulations or specification requirements.

The DPM system shown can be installed with welded lap joints. Contact Visqueen Technical Services for further information.

Drawing not to scale, use figured dimensions only. All figured dimensions are in millimetres.

**Guidance Detail**

Date: January 2024

Drawing No: SW-HP DPM-07

Revision: A | Drawn by: JR

Approved by: SD


 Tel: 0333 202 6800  
 enquiries@visqueen.com  
 www.visqueen.com

© Copyright reserved. This drawing may not be reproduced or amended without prior written permission.



**MEMBRANE ABOVE SLAB  
BEAM & BLOCK FLOOR AT  
LIFT PIT**